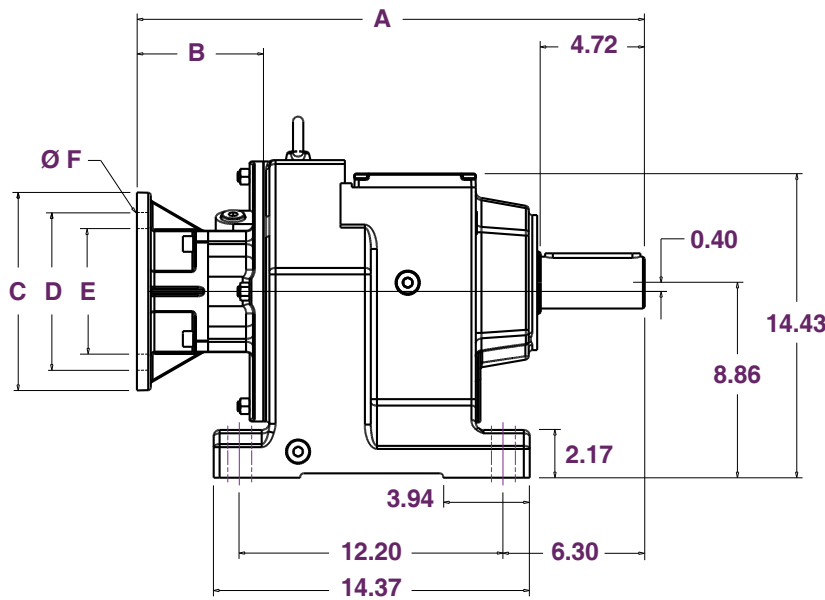


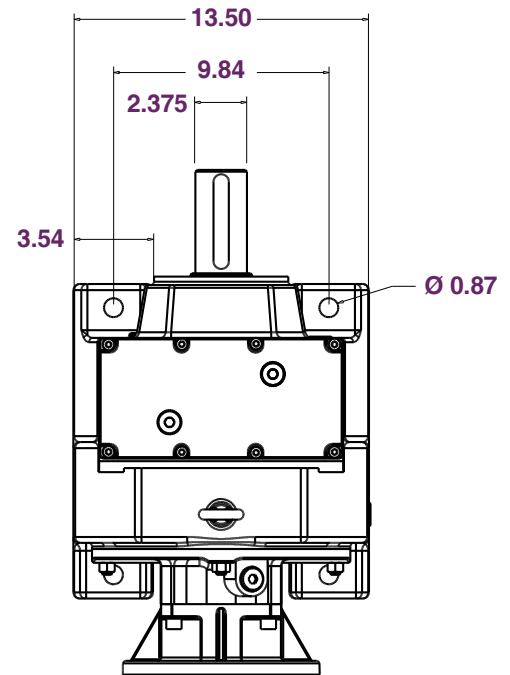


# VR98 Dimensions

All dimensions listed in inches



Side



Top

### Available Flanges:

Nema Flange Size	A (in)	B (in)	C (in)	D (in)	E (in)	F (in)
180TC	20.94	3.62	9.00	7.25	8.500	0.59
210TC	23.07	5.75	9.00	7.25	8.500	0.59
250TC	24.44	7.13	9.00	7.25	8.500	0.59
280TC	17.60	7.13	11.26	9.00	10.500	0.59

### Motor Options

Nema Frame	Motor Shaft Dia. (in)
182TC	1.125
184TC	1.125
213TC	1.375
215TC	1.375
254TC	1.625
256TC	1.625
284TC	1.875
286TC	1.875

### Efficiency

Reduction Stages	Efficiency (%)
2	96
3	94

### Specifications

Output Key Width (in)	Est. Oil* (oz)	Approx. Dry Reducer Weight* (lbs)
0.625	155.55	218.26

**NOTE:** \*Oil estimation assumes standard mounting position "A". See page 55 for more information on specific oil amounts in various mounting positions.

\*Reducer weights are approximate and can vary by several pounds depending on flange and ratio options.

Ø = common engineering symbol for "diameter".

# VR98 Specifications

**Stock VR98 Specifications:**  
**Input Speed: 1750 RPM**

**Service Factor: 1.0**

Nominal Ratio	Actual Ratio (:1)	Output Speed (RPM)	Input Power (HP)	Output Power (HP)	Output Torque (in-lbs)	Reduction Stages
60	59.92	29.21	13.07	12.30	26,552.1	3
40	42.78	40.91	18.31	17.23	26,552.1	3
25	25.03	69.92	28.93	27.79	25,047.5	2

**Special Order VR98 Specifications:**  
**Input Speed: 1750 RPM**

**Service Factor: 1.0**

Actual Ratio (:1)	Output Speed (RPM)	Input Power (HP)	Output Power (HP)	Output Torque (in-lbs)	Reduction Stages
289.74	6.04	2.70	2.54	26,552.1	3
255.71	6.84	3.06	2.88	26,552.1	3
241.25	7.25	3.25	3.06	26,552.1	3
216.28	8.09	3.62	3.41	26,552.1	3
186.30	9.39	4.20	3.96	26,552.1	3
170.02	10.29	4.61	4.34	26,552.1	3
150.78	11.61	5.20	4.89	26,552.1	3
126.75	13.81	6.18	5.82	26,552.1	3
116.48	15.02	6.73	6.33	26,552.1	3
103.44	16.92	7.57	7.13	26,552.1	3
92.48	18.92	8.47	7.97	26,552.1	3
83.15	21.05	9.42	8.87	26,552.1	3
72.17	24.25	10.85	10.22	26,552.1	3
65.21	26.84	12.01	11.31	26,552.1	3
53.21	32.89	14.72	13.86	26,552.1	3
47.58	36.78	16.46	15.50	26,552.1	3
37.13	47.13	21.10	19.86	26,552.1	3
33.25	52.63	22.70	21.36	25,578.5	3
27.58	63.45	25.28	23.79	23,631.4	3
22.37	78.23	31.11	29.88	24,073.9	2
20.14	86.89	33.16	31.85	23,100.3	2
18.24	95.94	35.07	33.68	22,126.8	2
16.17	108.23	37.98	36.48	21,241.7	2
14.62	119.70	40.26	38.66	20,356.6	2
12.39	141.24	45.23	43.44	19,383.0	2
10.83	161.59	49.38	47.43	18,498.0	2
9.29	188.37	55.92	53.70	17,966.9	2
8.39	208.58	61.91	59.46	17,966.9	2
7.12	245.79	71.88	69.03	17,701.4	2
6.21	281.80	77.88	74.80	16,727.8	2
5.20	336.54	87.59	84.12	15,754.2	2
4.50	388.89	92.69	89.02	14,426.6	2

